

BALLOSTAR KHA-F

Flange design

GENERAL FEATURES

- » 3-piece ball valve with full bore
- » Floating ball, antistatic, lockable
- » Double tightness in both directions
- » Modular system components

CONNECTIONS

- » Flange in accordance with DIN EN 1092-1 or ASME B 16.5

DIMENSIONS

Face-to-face dimensions in accordance with EN 558-1, series 1 or dimensions in accordance with ANSI B16.10 CL 300

ACCEPTANCE TESTING

- » Seat leak tightness: EN 12266-1 P12, leakage rate A
- » Tightness to atmosphere: EN 12266-1 P11
- » Strength: EN 12266-1 P10

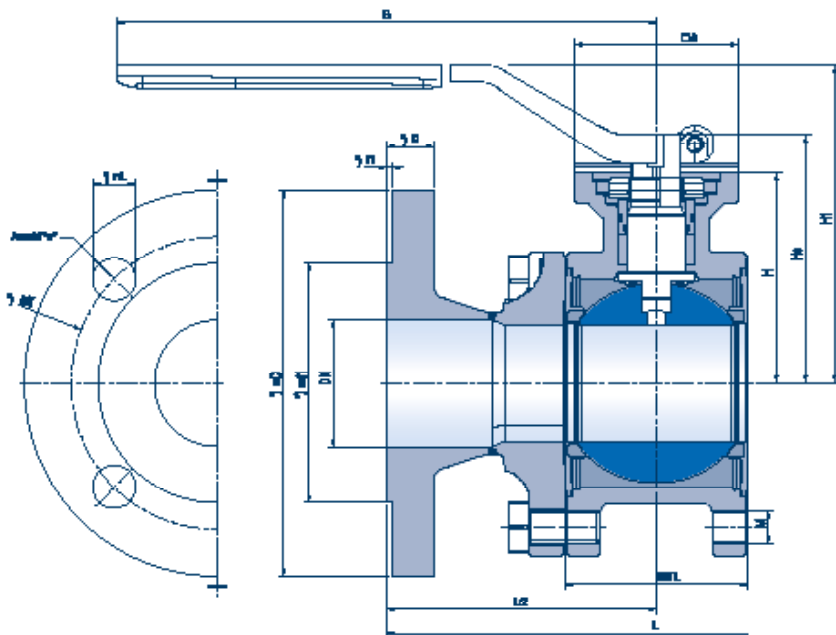
AUTOMATION

- » Flange connection in accordance with ISO 5211, allows for direct mounting of an actuator or by means of brackets. Pneumatic and electrical actuators utilizable.

TEMPERATURE

-196 °C to +400 °C (see pT diagram)

* Flange dimensions in accordance with DIN EN 1092-1 or ASME B 16.5



DN	Dimensions										Pressure level**		Head flange size acc. to ISO 5211	Weight [kg]
	MTL	ØA	H	Hs	H1	G	SW	M	L (EN)	L (ASME)	VIII	Xc		
15 1/2"	26.4	42	35.0	43.5	83.0	130	8	M6	130	140	40	40	F04	2.3
20 3/4"	35.2	42	46.5	57.0	96.0	160	11	M8	150	152	40	40	F04	3.5
25 1"	41.5	42	50.0	60.5	100.0	160	11	M8	160	165	40	40	F04	4.3
32 1-1/4"	49.5	50	65.0	77.7	107.5	252	14	M10	180	178	40	40	F05	6.8
40 1-1/2"	63.0	50	72.5	85.2	114.7	252	14	M12	200	190	40	40	F05	9.0
50 2"	77.5	70	90.0	106.2	136.2	310	17	M14	230	216	40	40	F07	13.5
65 2-1/2"	93.5	70	100.0	116.2	146.2	310	17	M12	290	241	40	40	F07	18.0
80 3"	111.4	102	121.5	143.0	165.0	500	22	M16	310	282	40	40	F10	28.8
100 4"	131.6	102	135.0	156.5	178.5	500	22	M16	350	305	40	40	F10	40.6
125 5"	171.4	125	175.0	202.5	212.5	650	27	M16	400	381	40	40	F12	66.0

** other pressure classes on request